

PRO
RTX



PRO RTX

PROFESSIONAL CLOTHING EXTRA VALUE

ProRTX offers durable, professional clothing with extra value to suit a variety of workplaces.

From stylish and comfortable polos to softshell jackets and durable trousers, the perfect uniform.

ProRTX collection is ideal for building

| | | | | | |
|---|----|--|----|--|----|
| FX 101 PRO POLO | 04 | FX200 PRO SWEATER | 22 | FX500 PRO 2 LAYER SOFTSHELL JACKET | 40 |
| FX 101F LADIES PRO POLO | 06 | FX220 PRO SECURITY SWEATER | 23 | UNIFORM BUILDER | 42 |
| UNIFORM BUILDER | 08 | FX301 PRO SWEATSHIRT | 24 | FX500F LADIES PRO 2 LAYER SOFTSHELL JACKET | 44 |
| FX 102 PRO LONG SLEEVE POLO | 10 | UNIFORM BUILDER | 26 | FX550 PRO 2 LAYER SOFTSHELL GILET | 46 |
| UNIFORM BUILDER | 12 | MEN FX305 PRO 1/4 NECK ZIP SWEAT | 28 | FX551 PRO BODY WARMER | 48 |
| FX 105 PRO POLYESTER POLO | 14 | FX350 PRO HOODIE | 30 | FX600 PRO WORKWEAR CARGO TROUSER | 50 |
| FX 105F LADIES PRO POLYESTER POLO | 15 | MEN FX351 PRO ZIP HOODIE | 32 | FX601 PRO WORKWEAR TROUSER | 51 |
| MEN FX 110 PRO PREMIUM POLO | 16 | FX401 PRO MICRO FLEECE | 34 | FX603 PRO TRADESMAN TROUSER | 52 |
| FX 151 PRO T-SHIRT | 18 | FX402 PRO FLEECE | 36 | FX605 PRO CARGO SHORT | 53 |
| MEN FX 152 PRO LONG SLEEVE T-SHIRTS | 20 | UNIFORM BUILDER | 38 | | |
| QUICK GUIDES | 54 | SIZE GUIDES | 82 | | |

CONTENTS



ProRTX offers durable, professional clothing with extra value to suit a variety of workplaces.

From stylish and comfortable polos to softshell jackets and durable trousers, the perfect uniform.

ProRTX collection is ideal for building

| | | | | | |
|---|----|--|----|--|----|
| RX 101 PRO POLO | 04 | RX200 PRO SWEATER | 22 | RX500 PRO 2 LAYER SOFTSHELL JACKET | 40 |
| RX 101F LADIES PRO POLO | 06 | RX220 PRO SECURITY SWEATER | 23 | UNIFORM BUILDER | 42 |
| UNIFORM BUILDER | 08 | RX301 PRO SWEATSHIRT | 24 | RX500F LADIES PRO 2 LAYER SOFTSHELL JACKET | 44 |
| RX 102 PRO LONG SLEEVE POLO | 10 | UNIFORM BUILDER | 26 | RX550 PRO 2 LAYER SOFTSHELL GILET | 46 |
| UNIFORM BUILDER | 12 | MEN RX305 PRO 1/4 NECK ZIP SWEAT | 28 | RX551 PRO BODY WARMER | 48 |
| RX 105 PRO POLYESTER POLO | 14 | RX350 PRO HOODIE | 30 | RX600 PRO WORKWEAR CARGO TROUSER | 50 |
| RX 105F LADIES PRO POLYESTER POLO | 15 | MEN RX351 PRO ZIP HOODIE | 32 | RX601 PRO WORKWEAR TROUSER | 51 |
| MEN RX 110 PRO PREMIUM POLO | 16 | RX401 PRO MICRO FLEECE | 34 | RX603 PRO TRADESMAN TROUSER | 52 |
| RX 151 PRO T-SHIRT | 18 | RX402 PRO FLEECE | 36 | RX605 PRO CARGO SHORT | 53 |
| MEN RX 152 PRO LONG SLEEVE T-SHIRTS | 20 | UNIFORM BUILDER | 38 | | |
| QUICK GUIDES | 54 | SIZE GUIDES | 82 | | |

CONTENTS





SOLID GREY <<

RX101
PRO POLO
XS-8XL

- » **Fabric Content:**
50% Cotton
50% Polyester
- » **Fabric Weight:**
220gsm
- » **Features:**
Self-coloured taped neck /
Twin needle stitching /
Ribbed self-coloured collar

» **Colours**



V E R S A T I L E W O R K W E A R



KHAKI

» This versatile polo is essential for any work wear uniform. Available in 19 colours, this polo is perfect for most embellishment due to its durable fabric, whilst also providing all-day comfort.

* Available in sizes up to 8XL with all other colours up to 7XL

TURQUOISE





SAPPHIRE BLUE <<

RX101F
LADIES PRO POLO
XS-4XL

- » **Fabric Content:**
50% Cotton
50% Polyester
- » **Fabric Weight:**
220gsm
- » **Features:**
Self-coloured taped neck /
Twin needle stitching /
Ribbed self-coloured collar

» **Colours**



FUCHSIA

» Much like the RX101, the ladies Pro Polo is great for printing and embellishment. It is also supplied in a comfortable feminine fit.



BOTTLE GREEN

RX101F
LADIES PRO POLO

PRO
RTX
UNIFORM
BUILDER



» Putting safety, comfort and usability at the forefront of this outfit combination. These selection of products make it the perfect uniform solution.

RX101
PRO POLO
See Pg04



UNISEX FIT

RX700
WAISTCOAT
See Pg58



CLASS 1 CLASS 2 UNISEX FIT

RX603
PRO TRADESMAN
TROUSER
See Pg52



UNISEX FIT

SEE PGS 54-55 FOR QUICK COLOUR GUIDES SEE PGS 82-83 FOR SIZE GUIDES

UNIFORM BUILDER

Ribbed self-coloured collar

3 Button placket

Twin needle stitching



PRO RTX



UNISEX FIT



BLACK <<

RX102

PRO LONG SLEEVE POLO

S-4XL



Fabric Content:

50% Cotton
50% Polyester



Fabric Weight:

220gsm



Features:

3 button placket /
Twin needle stitching /
Ribbed self-coloured collar



Colours



Black



Navy



Solid Grey



SOLID GREY

» Crafted from the same fabric and fit as the best selling RX101 Pro Polo. This long sleeve polo is ideal for cooler months.



NAVY

RX102
PRO LONG SLEEVE POLO

PRO **RTX** UNIFORM BUILDER



» Putting safety, comfort and functionality at the forefront of this outfit combination. These selection of products make it the perfect uniform solution.

RX102

PRO LONG SLEEVE
POLO

See Pg10



UNISEX FIT

RX700

WAISTCOAT

See Pg58



CLASS 1



CLASS 2



UNISEX FIT

RX600

PRO WORKWEAR
CARGO TROUSER

See Pg50



UNISEX FIT

SEE PGS 54-55 FOR QUICK COLOUR GUIDES SEE PGS 82-83 FOR SIZE GUIDES

UNIFORM BUILDER



Self-colour
taped neck

Ribbed
self-coloured
collar

Twin needle
stitching

PRO **RTX**

ماما
BREATHABLE



BOTTLE GREEN <<

RX105

PRO POLYESTER POLO

S-3XL

- » **Fabric Content:**
100% Polyester
- » **Fabric Weight:**
200gsm
- » **Features:**
3 button placket /
Twin needle stitching /
Ribbed self-coloured collar

» Colours



Black Solid Grey White Bottle Green Navy Royal Blue Burgundy Red



» This high quality affordable Pro Polo is engineered with extreme performance and embellishment in mind. Supplied in a modern fit this polo is an superb addition to any uniform.

V E R S A T I L E W O R K W E A R

ماجاوا
BREATHABLE



RX105F
LADIES PRO POLYESTER POLO
XS-2XL

- » **Fabric Content:** 100% Polyester
- » **Fabric Weight:** 200gsm
- » **Features:** Pique knit / Twin needle stitching / Ribbed self-coloured collar / 2 button placket

» **Colours**



» Fit for any workplace environment, this ladies polo is fashioned from 100% polyester pique knit, enhancing quality and durability and is made in a feminine and modern fit.

PRO **RTX**



UNISEX FIT



NAVY <<

**NEW
STYLE**

RX110

PRO PREMIUM POLO

XS-4XL

- » **Fabric Content:**
50% Cotton
50% Polyester
- » **Fabric Weight:**
250gsm
- » **Features:**
Ottoman cuffs and collar /
Self-coloured taped neck /
3 button placket / Side vents

» **Colours**



Black

Charcoal

Navy

Royal Blue



» This premium polo offers a great combination of style, comfort and durability. Upgrade any uniform with this heavier weight, versatile workwear staple.



ROYAL BLUE

RX110
PRO PREMIUM POLO | **NEW STYLE**

PRO **RTX**



SOLID GREY <<

RX151
PRO T-SHIRT
XS-6XL

- » **Fabric Content:**
50% Cotton
50% Polyester
- » **Fabric Weight:**
180gsm
- » **Features:**
Self-coloured taped back neck
and shoulder / Twin needle
stitching / Side seam

» **Colours**



M U L T I P U R P O S E C L O T H I N G



NEW
SAPPHIRE BLUE

- » This unisex essential fits like a well-loved favourite and is designed to be hard wearing and comfortable. The fabric blends creates a smooth surface for custom printing.

* Available in sizes up to 6XL with all other colours up to 5XL

RX151
PRO T-SHIRT

NEW COLOURS

NEW
SKY BLUE
BOTTLE GREEN



PRO
RTX



UNISEX FIT



CHARCOAL <<

NEW
STYLE

RX152

PRO LONG SLEEVE T-SHIRT

XS-4XL

- » **Fabric Content:**
50% Cotton
50% Polyester
- » **Fabric Weight:**
180gsm
- » **Features:**
Self-coloured taped neck /
Twin needle stitching /
Ribbed self-coloured collar

» **Colours**



Black

Charcoal

Navy

White



- » This long sleeve T-shirt is perfect for the cooler conditions. It offers a stylish fit and can be used as a base layer for extra warmth. Coming with all the qualities you expect from a workwear T-shirt.

RX152
PRO LONG SLEEVE T-SHIRT

NEW STYLE

WHITE



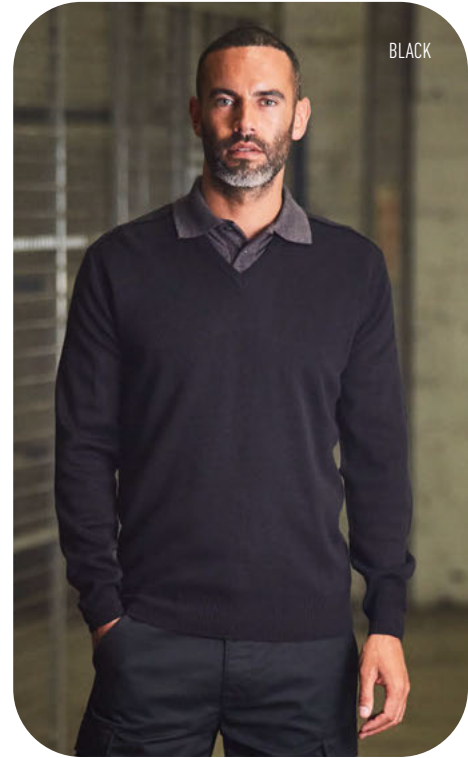
PRO RTX



RX200 PRO SWEATER S-5XL

- » **Fabric Content:**
100% Acrylic
- » **Fabric Weight:**
260gsm
10 gauge
- » **Features:**
Fashioned V-neck /
Set-in-sleeves /
Knitted saddle shoulder

» Colours



- » This uniform staple is great addition for multiple industries. Supplied in a modern, unisex fit and finished with knitted saddle shoulders, this sweater is great for personalisation and is extremely versatile.



UNISEX FIT



BLACK <<

RX220

PRO SECURITY SWEATER

S-5XL

- » **Fabric Content:**
100% Acrylic Body
65% Polyester /
35% Cotton Patches
- » **Fabric Weight:**
470gsm / 5 gauge
- » **Features:**
Tear and release fastened
epaulettes / Elbow patches /
Pen pocket

» Colours



Black

Navy



NAVY

» Ideal for security applications, this Pro Security style ensures a professional look while remaining comfortable, practical and warm.

PRO RTX



UNISEX FIT



RED <<

RX301 PRO SWEATSHIRT S-7XL

- » **Fabric Content:**
55% Polyester
45% Cotton
- » **Fabric Weight:**
300gsm
- » **Features:**
Twin needle stitching /
Crew neck style with set in sleeve /
Inner fabric brushed fleece

» Colours



D U R A B L E C L O T H I N G



» The unisex Pro sweatshirt is a great choice if your business requires a warmer option. Supplied in a modern yet comfortable fit this garment can be easily embellished perfect for any working environment.

* Available in sizes up to 7XL with all other colours up to 5XL

CHARCOAL



PRO **RTX**
UNIFORM
BUILDER



» Perfect for colder weather this trio provides weather protection as well as a stylish design and fit.

RX301

PRO SWEATSHIRT
See Pg24



UNISEX FIT

RX550

PRO 2 LAYER
SOFTSHELL GILET
See Pg46



UNISEX FIT



WIND
RESISTANT

RX600

PRO WORKWEAR
CARGO TROUSER
See Pg50



UNISEX FIT

SEE PGS 54-55 FOR QUICK COLOUR GUIDES SEE PGS 82-83 FOR SIZE GUIDES

UNIFORM BUILDER



Set in sleeves



Twin needle stitching



Inner fabric brushed fleece

PRO **RTX**



UNISEX FIT



CHARCOAL <<

**NEW
STYLE**

RX305

PRO 1/4 NECK ZIP SWEAT

S-4XL



Fabric Content:

55% Polyester
45% Cotton



Fabric Weight:

300gsm



Features:

YKK Zipper and puller /
2x1 rib on cuff and hem /
Brushed inner fleece



Colours



Black

Charcoal

Navy



BLACK

» This classic garment delivers comfort without compromising on style. Update your uniform with this key workwear style built for style and durability. This sturdy garment will see you through any work environment.



NAVY

RX305
PRO 1/4 NECK ZIP SWEAT

NEW STYLE

PRO RTX



UNISEX FIT



BLACK <<

RX350 PRO HOODIE S-7XL

- » **Fabric Content:**
55% Polyester
45% Cotton
- » **Fabric Weight:**
300gsm
- » **Features:**
Fully lined hood /
Twin needle stitching /
Inner fabric brushed fleece

» Colours



V E R S A T I L E C L O T H I N G



- » Comfortable, classic and cut in a modern fit this slip-on style has a drawcord hood and front kangaroo pocket. It's both a reliable style staple and durable enough to wear every working day.

* Available in sizes up to 7XL with all other colours up to 5XL

(l-r)
SOLID GREY
CHARCOAL
HEATHER GREY



PRO
RTX



UNISEX FIT



NAVY <<

**NEW
STYLE**

RX351

PRO ZIP HOODIE

S-4XL

- » **Fabric Content:**
55% Polyester
45% Cotton
- » **Fabric Weight:**
300gsm
- » **Features:**
YKK Zipper and puller /
Fully lined hood / Self coloured
adjustable drawcords

» **Colours**



Black

Charcoal

Navy



- » Add to your workwear uniform with the Pro Zip Hoodie. A durable, workwear essential this garment is a stylish fit with twin stitching that has been used to ensure extra durability.



CHARCOAL

RX351
PRO ZIP HOODIE

NEW STYLE

PRO **RTX**



UNISEX FIT



SOLID GREY <<

RX401

PRO MICRO FLEECE

XS-7XL

- » **Fabric Content:**
100% Polyester
- » **Fabric Weight:**
200gsm
- » **Features:**
Full front zip / Zipped pockets
Bound cuff and hem /
Side panel insert for modern fit

» Colours



Black*

Solid Grey

Navy*



BLACK

- » Built for multi-climate activity, the unisex Pro Micro Fleece provides the perfect balance between weight and insulation. The cuffs and hem are finished with a smooth flat binding creating a smart, professional look.

M O D E R N F I T W O R K W E A R

* Available in sizes up to 7XL with all other colours up to 5XL

NAVY



PRO
RTX



UNISEX FIT



BLACK <<

RX402
PRO FLEECE
XS-7XL

- » **Fabric Content:**
100% Polyester
- » **Fabric Weight:**
300gsm
- » **Features:**
Elasticated cuffs /
Adjustable shock cord hem /
Full front zip / Zipped pockets

» **Colours**



Black

Charcoal

Navy



- » The Pro Fleece is a versatile addition to your workwear collection. Features include an adjustable shock cord hem and elasticated cuff to keep the heat in, controlling temperature and fit.

NAVY



PRO **RTX**
UNIFORM
BUILDER



» All of the Pro RTX range is made to be worn together. This uniform combination is not only comfortable but highly durable.

RX402

PRO FLEECE
See Pg36



UNISEX FIT

RX151

PRO T-SHIRT
See Pg18



UNISEX FIT

RX605

PRO CARGO SHORT
See Pg53



UNISEX FIT

SEE PGS 54-55 FOR QUICK COLOUR GUIDES SEE PGS 82-83 FOR SIZE GUIDES

UNIFORM BUILDER



Pocket
Zips

Elasticated
Cuffs

Adjustable
shock
cord hem

PRO **RTX**

SHOWER RESISTANT WIND RESISTANT



NAVY <<

RX500 PRO 2 LAYER SOFTSHELL JACKET S-5XL

- » **Fabric Content:**
97% Polyester
3% Elastane
- » **Fabric Weight:**
280gsm
- » **Features:**
Chin guard /
Internal storm flap /
Adjustable shock cord hem

» Colours



Black*

Charcoal

Navy*



CHARCOAL

- » Ideal for keeping warm outdoors, the softshell jacket doubles up as smart workwear and casual wear. It features front zip fastening and handy front zipped hand pockets, making it light enough to keep you mobile, but traps heat during the cooler weather.

M U L T I P U R P O S E C L O T H I N G

* Available in sizes up to 5XL with all other colours up to 3XL

RX500
PRO 2 LAYER SOFTSHELL JACKET

BLACK



PRO **RTX**
UNIFORM
BUILDER



» Bringing together these garments again demonstrates the exceptional versatility of the Pro RTX Range. This uniform combination provides weather protection matched with the staple Pro T-Shirt incorporates a stylish look.

RX500

PRO 2 LAYER
SOFTSHELL JACKET
See Pg40



RX151

PRO T-SHIRT
See Pg18



UNISEX FIT

RX600

PRO WORKWEAR
CARGO TROUSER
See Pg50



UNISEX FIT

SEE PGS 54-55 FOR QUICK COLOUR GUIDES SEE PGS 82-83 FOR SIZE GUIDES

UNIFORM BUILDER



Chin
Guard

Internal
storm flap

Adjustable
shock cord

PRO RTX

SHOWER RESISTANT WIND RESISTANT



BLACK

RX500F LADIES PRO 2 LAYER SOFTSHELL JACKET XS-2XL

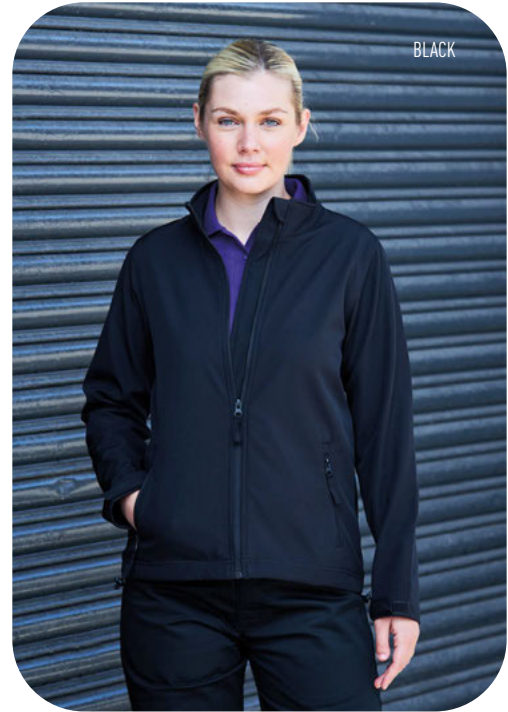
- » **Fabric Content:**
97% Polyester
3% Elastane
- » **Fabric Weight:**
280gsm
- » **Features:**
Chin guard /
Internal storm flap /
Adjustable shock cord hem

» Colours



Black

Navy



- » Available in a flattering female fit, the softshell jacket is ideal for keeping warm outdoors whilst creating a smart and professional uniform look.

C O M P L I M E N T A R Y C L O T H I N G

RX500F
LADIES PRO 2 LAYER SOFTSHELL JACKET

NAVY



PRO **RTX**

 **SHOWER RESISTANT**
 **WIND RESISTANT**
 **UNISEX FIT**



BLACK <<

RX550

PRO 2 LAYER SOFTSHELL GILET

S-5XL

- » **Fabric Content:**
97% Polyester
3% Elastane
- » **Fabric Weight:**
280gsm
- » **Features:**
Chin guard /
Internal storm flap /
Adjustable shock cord hem

» **Colours**



Black* Charcoal Navy*



- » An extra layer for keeping warm outdoors, this softshell gilet features full front zip fastening and handy front zipped hand pockets. The shell of the gilet will keep you warm and dry due to the windproof and showerproof properties.

S T Y L I S H C L O T H I N G

* Available in sizes up to 5XL with all other colours up to 3XL

RX550
PRO 2 LAYER SOFTSHELL GILET

NAVY



PRO
RTX

SHOWER
RESISTANT

UNISEX FIT



NAVY <<

RX551 PRO BODYWARMER S-4XL



Fabric Content:

Outer: 100% Polyester,
210T Water Repellent 55gsm
Inner: 100% Polyester / 190T Taffeta
Padding: 8oz



Features:

Fleece lined stand collar /
Full length zip with zip guard /
Dropped back hem



Colours



Black

Navy



» Ideal for layering, the Pro Bodywarmer works with anything from a polo to a fleece. Quilted for extra comfort and warmth, this bodywarmer has side zip pockets, a funnel collar and dropped back hem for comfort whilst working.

BLACK



PRO **RTX**



UNISEX FIT



BLACK <<

RX600

PRO WORKWEAR CARGO TROUSER

S-4XL

REGULAR 31" / LONG LENGTH 33"

- » **Fabric Content:**
65% Polyester
35% Cotton
- » **Fabric Weight:**
240gsm
- » **Features:**
2 closed cargo pockets /
1 back open pocket /
External knee pad pockets

» Colours



Black

Navy



- » The cargo trouser is a workwear staple and these have been designed for comfort and versatility. Ideal for everyday use, they feature three sets of pockets and a traditional waist band with belt loops.



UNISEX FIT



RX601 PRO WORKWEAR TROUSER

S-4XL

REGULAR 31" / LONG LENGTH 33"

- » **Fabric Content:**
65% Polyester
35% Cotton
- » **Fabric Weight:**
240gsm
- » **Features:**
Traditional waistband with
belt loops / Concealed zip fly /
1 back open pocket

Colours



Black

Navy



RX600
PRO WORKWEAR CARGO TROUSER

RX601
PRO WORKWEAR TROUSER

» Designed to be versatile and comfortable, the pro workwear trouser has minimal features for a clean, professional look. These trousers are made from durable poly cotton blend, boasting a modern comfortable fit.

PRO RTX



UNISEX FIT



BLACK <<

RX603

PRO TRADESMAN TROUSER

S-4XL

REGULAR 31" / LONG LENGTH 33"

- » **Fabric Content:** 65% Polyester / 35% Cotton
- » **Fabric Weight:** 240gsm
- » **Features:** Part elasticated waistband / Belt loop / 2 upper utility pockets / External knee pad pockets

» **Colours**



Black



- » A multi-functional hard wearing trouser, the Pro Tradesman Trousers are built for all your workwear needs, with multi pockets, knee pad pockets and hammer loop this trouser has it all. Made from durable poly/cotton fabric with a part elasticated waistband for flexibility and comfort in wear.



UNISEX FIT



BLACK <<

RX605 PRO CARGO SHORT S-4XL

» Fabric Content:

65% Polyester
35% Cotton

» Fabric Weight:

240gsm

» Features:

5 Belt loops /
2 sided cargo pocket with flaps /
Left side back patch pocket

» Colours



Black



» Ideal for the warmer weather, this multi-functional cargo short is made from hardwearing poly/cotton fabric with a traditional waist band with belt loops, perfect to keep you cool while hard at work.

RX603
PRO TRADESMAN TROUSER

RX605
PRO CARGO SHORT

RX110

PRO PREMIUM POLO

SIZES: **XS-4XL**

FABRIC CONTENT:

50% Cotton / 50% Polyester

FABRIC WEIGHT: **250gsm**



RX152

PRO LONG SLEEVE T-SHIRT

SIZES: **XS-4XL**

FABRIC CONTENT:

50% Cotton / 50% Polyester

FABRIC WEIGHT: **220gsm**



RX105F

LADIES PRO POLYESTER POLO

SIZES: **XS-2XL**

FABRIC CONTENT:

100% Polyester

FABRIC WEIGHT: **200gsm**



RX101

PRO POLO

SIZES: **XS-8XL***

FABRIC CONTENT:

50% Cotton / 50% Polyester

FABRIC WEIGHT: **220gsm**



*Available in sizes up to 8XL

NEW COLOURS

RX151

PRO T-SHIRT

SIZES: **XS-6XL**

FABRIC CONTENT:

50% Cotton / 50% Polyester

FABRIC WEIGHT: **180gsm**



*Available in sizes up to 6XL

RX101F

LADIES PRO POLO

SIZES: **XS-4XL**

FABRIC CONTENT:

50% Cotton / 50% Polyester

FABRIC WEIGHT: **220gsm**



RX200

PRO SWEATER

SIZES: **S-5XL**

FABRIC CONTENT:

100% Acrylic

FABRIC WEIGHT:
260gsm/10gauge



SCAN THIS CODE
TO ACCESS OUR
PRINT GUIDES.



RX102

PRO LONG SLEEVE
POLO

SIZES: **S-4XL**

FABRIC CONTENT:

**50% Cotton /
50% Polyester**

FABRIC WEIGHT: **220gsm**



RX105

PRO POLYESTER POLO

SIZES: **S-3XL**

FABRIC CONTENT:

100% Polyester

FABRIC WEIGHT: **200gsm**



RX220

PRO SECURITY
SWEATER

SIZES: **S-5XL**

FABRIC CONTENT:

**Body: 100% Acrylic
Patches: 65% Polyester
35% Cotton**

FABRIC WEIGHT:
470gsm/5gauge



RX305

PRO 1/4 NECK ZIP SWEAT
SIZES: **S-4XL**
FABRIC CONTENT:
55% Polyester / 45% Cotton
FABRIC WEIGHT: **300gsm**



RX351

PRO ZIP HOODIE
SIZES: **XS-4XL**
FABRIC CONTENT:
55% Polyester / 45% Cotton
FABRIC WEIGHT: **300gsm**



RX500

PRO 2 LAYER SOFTSHELL
JACKET
SIZES: **S-5XL**
FABRIC CONTENT:
97% Polyester / 3% Elastane
FABRIC WEIGHT: **280gsm**



**Available in sizes up to 5XL*

RX600

PRO WORKWEAR CARGO
TROUSER
SIZES: **S-4XL (R&L)**
FABRIC CONTENT:
65% Polyester / 35% Cotton
FABRIC WEIGHT: **240gsm**



RX301

PRO SWEATSHIRT
SIZES: **S-7XL**
FABRIC CONTENT:
55% Polyester / 45% Cotton
FABRIC WEIGHT: **300gsm**



RX500F

LADIES PRO 2 LAYER
SOFTSHELL JACKET
SIZES: **XS-2XL**
FABRIC CONTENT:
97% Polyester / 3% Elastane
FABRIC WEIGHT: **280gsm**



RX601

PRO WORKWEAR
TROUSER
SIZES: **S-4XL (R&L)**
FABRIC CONTENT:
65% Polyester / 35% Cotton
FABRIC WEIGHT: **240gsm**



RX350

PRO HOODIE
SIZES: **S-7XL**
FABRIC CONTENT:
55% Polyester / 45% Cotton
FABRIC WEIGHT: **300gsm**



RX550

PRO 2 LAYER SOFTSHELL
GILET
SIZES: **S-5XL**
FABRIC CONTENT:
97% Polyester / 3% Elastane
FABRIC WEIGHT: **280gsm**



RX603

PRO TRADESMAN
TROUSER
SIZES: **S-4XL (R&L)**
FABRIC CONTENT:
65% Polyester / 35% Cotton
FABRIC WEIGHT: **240gsm**



RX401

PRO MICRO FLEECE
SIZES: **XS-7XL**
FABRIC CONTENT:
100% Polyester
FABRIC WEIGHT: **200gsm**



**Available in sizes up to 7XL*

RX402

PRO FLEECE
SIZES: **XS-7XL**
FABRIC CONTENT:
100% Polyester
FABRIC WEIGHT: **300gsm**



RX551

PRO BODYWARMER
SIZES: **S-4XL**
FABRIC CONTENT:
Outer: 100% Polyester, 210T Water Repellent 55gsm, Inner: 100% Polyester, 190T Taffeta, / Padding: 8oz



RX605

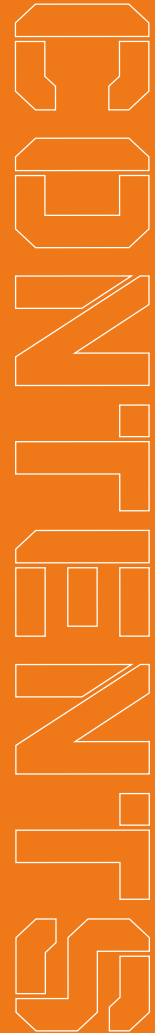
PRO CARGO
SHORT
SIZES: **S-4XL**
FABRIC CONTENT:
65% Polyester / 35% Cotton
FABRIC WEIGHT: **240gsm**



ProRTX High Visibility offers 11 certified high visibility styles essential for an array of workplaces, and ideal to complete the **ProRTX** uniform.

ProRTX High Visibility and **ProRTX** are designed to be worn separately or in combination to ensure comfort and safety in a whole range of weather and temperature conditions.

| | | | |
|-------------------------------------|----|------------------------------------|----|
| RX700 WAISTCOAT | 58 | RX730 HV SWEATSHIRT | 72 |
| RX700J KIDS WAISTCOAT | 60 | RX740 HV HOODIE | 73 |
| RX705 EXECUTIVE WAISTCOAT | 62 | RX750 HV FULL ZIP FLEECE | 74 |
| UNIFORM BUILDER | 64 | RX760 HV CARGO TROUSER | 75 |
| RX710 HV POLO | 66 | RX770 HV BOMBER JACKET | 76 |
| RX715 HV LONG SLEEVE POLO | 68 | UNIFORM BUILDER | 78 |
| RX720 HV T-SHIRT | 70 | | |
| <hr/> | | | |
| QUICK GUIDES | 80 | SIZE GUIDES | 82 |







RX700
WAISTCOAT
S-6XL

Fabric Content:
100% Polyester

Fabric Weight:
120gsm

Features:
Lightweight / Full front tear and release fastening / Over shoulder and around body reflective tape



» This waistcoat is a workwear essential available in 25 colourways.

Colours



*Certified: EN ISO 20471:2013+A1:2016, RIS / 3279 / TOM, ISSUE 1:2016 (Orange Only)
Colours available up to 5XL & 6XL are indicated. All other colours are available up to 3XL.





HV YELLOW
Orange

RX7000
WAISTCOAT



RX700J KIDS WAISTCOAT

S(4-6yrs) M(7-9yrs) L(10-12yrs)

- » **Fabric Content:** 100% Polyester
- » **Fabric Weight:** 120gsm
- » **Features:** Lightweight / Full front tear and release fastening / Over shoulder and around body reflective tape

» Colours



» Keep children safe with our sleeveless high visibility vest; it's lightweight and complete with tear and release fastening for easy removal.



HV-ORANGE

RX700J
KIDS WAISTCOAT



HV YELLOW <<
Paramedic Green

RX705

EXECUTIVE WAISTCOAT

S-5XL

- » **Fabric Content:** 100% Polyester
- » **Fabric Weight:** 120gsm
- » **Features:** ID card and mobile pocket / 2 side front expandable pockets with flaps / Over shoulder and around body reflective tape



HV YELLOW

» Our executive vest is perfect for everyone from managers to supervisors. The vest features an ID card pocket, a mobile phone pocket, key loop and 2 side front expandable pockets with flaps.

*Certified: EN ISO 20471:2013+A1:2016, RIS/3279/TOM ISSUE 1:2016 (Orange Only)



HV ORANGE

RX705
EXECUTIVE WAISTCOAT

PRO RTX
HIGH VISIBILITY

UNIFORM BUILDER



» Safety and comfort is the focus of the Pro RTX High Visibility range. This combination of garments come in a huge range of colours and sizes suitable for any industry.

RX700

WAISTCOAT
See Pg58



UNISEX FIT

RX105F

LADIES PRO
POLYESTER POLO
See Pg15



BREATHABLE

RX601

PRO WORKWEAR
TROUSER
See Pg51



UNISEX FIT

SEE PGS 80-81 FOR QUICK COLOUR GUIDES SEE PGS 82-83 FOR SIZE GUIDES

Over shoulder and around
body reflective tape

Colour
matching
trim

Tear
and
release
fastening





RX710
HV POLO
S-5XL

- » **Fabric Content:** 100% Polyester Birdseye
- » **Fabric Weight:** 150gsm
- » **Features:** Ribbed contrast colour collar / Twin needle stitching / Side seam vents / Around body tape finishes before side seam for comfort and ease of fit

» **Colours**



- » Crafted from lightweight, breathable birdseye polyester, with contrast collar and 3-button placket, the High Visibility Polo is a modern and functional workwear staple.
- » Reflective tape finishes short of the side seam for a flexible and comfortable fit whilst providing level 2 protection.

HV YELLOW
Navy

HV ORANGE
Navy





HV ORANGE Navy

RX715

HV LONG SLEEVE POLO

S-5XL

- » **Fabric Content:** 100% Polyester Birdseye
- » **Fabric Weight:** 150gsm
- » **Features:** Ribbed contrast colour collar / Twin needle stitching / Side seam vents / Around body tape finishes before side seam for comfort and ease of fit

Colours



HV Orange Navy
HV Yellow Navy



HV YELLOW Navy

- » Providing extra warmth and coverage, the High Visibility Long Sleeve Polo provides level 3 protection.

Crafted from lightweight, breathable birdseye polyester with a contrast collar and 3-button placket this creates a practical and stylish look.



HV ORANGE
Navy

RX715
HV LONG SLEEVE POLO



RX720 HV T-SHIRT S-5XL

- » **Fabric Content:** 100% Polyester Birdseye
- » **Fabric Weight:** 150gsm
- » **Features:** Ribbed contrast colour collar / Twin needle stitching / Around body tape finishes before slide seam for comfort and ease of fit



» The high visibility t-shirt is a workplace essential, crafted from lightweight, breathable birdseye polyester, the reflective tape finished short of the side seam for a flexible and comfortable fit. The contrast collar creates both a functional yet stylish garment.



HV ORANGE
Navy

RX720
HV T-SHIRT



HV YELLOW
Navy

RX730

HV SWEATSHIRT

S-5XL

- » **Fabric Content:** 100% Polyester
- » **Fabric Weight:** 280gsm
- » **Features:** Ribbed contrast colour collar / Ribbed contrast colour cuff and hem / Inner fabric brushed fleece

Colours



HV Orange Navy

HV Yellow Navy



HV ORANGE
Navy

» Warm, comfortable and timeless, the high visibility sweatshirt provides level 3 protection and is a staple workwear item that will see you through any season.



HV ORANGE
Navy

RX740
HV HOODIE
S-5XL

- » **Fabric Content:**
100% Polyester
- » **Fabric Weight:**
280gsm
- » **Features:**
Double fabric hood with adjustable drawcords / Ribbed contrast colour cuff and hem / Inner fabric brushed fleece

» **Colours**



HV YELLOW
Navy

» With a double fabric hood and adjustable drawcords, this is a key piece to see you through any season. The contrast colour hem and cuff creates a stylish yet practical finish.



HV YELLOW
Navy

RX750

HV FULL ZIP FLEECE

S-5XL

- » **Fabric Content:**
100% Polyester Fleece
- » **Fabric Weight:**
280gsm
- » **Features:**
Stand up contrast colour collar /
Contrast colour cuff and hem /
Adjustable shock cord hem /
Full front zip fastening

» Colours



HV ORANGE
Navy

» The high visibility full zip fleece is perfect for when you need to be seen whilst remaining warm. In high visibility yellow and orange with navy contrast in the most dirt prone areas making this both a stylish and practical garment that provides level 3 protection.



CLASS 1



SHOWER
RESISTANT



UNISEX
FIT



HV ORANGE
Navy

RX760

HV CARGO TROUSER

S-5XL

Fabric Content:
80% Polyester
20% Cotton Twill

Fabric Weight:
280gsm

Features:
Side elasticated /
Side seam and cargo pockets /
Knee pad pockets

Colours

Class 1



HV Orange



HV Yellow



Navy

Non Certified



HV YELLOW
Navy

» The high visibility cargo trouser perfectly completes your workwear needs. Made from a durable poly/cotton fabric with water repellent finish. Available with contrast navy hem providing level 1 protection and in solid navy for times where less visibility is required.



HV YELLOW

RX770 HV BOMBER JACKET S-5XL

Fabric Content:

- 100% Polyester 300D Oxford with PU Coating / 185gsm (Shell)
- 100% Polyester /160gsm (Padding)
- 100% Polyester Taffeta /45gsm (Lining)

Colours



HV Orange

HV Yellow

Features:

- Foldaway hood /
- Zipped front fastening with studded storm flaps /Waterproof



HV ORANGE

» A classic workwear essential, our high visibility bomber jacket is an ideal layer that is functional and warm to kit out your workforce in colder weather. Zipped front with studded storm flaps for added warmth in extreme weathers.

HV YELLOW



PRO
RTX
HIGH VISIBILITY

UNIFORM BUILDER



» This comfortable combination provides complete protection from the elements whilst working outdoors.

RX730
HV SWEATSHIRT
See Pg72



CLASS 1



UNISEX FIT

RX760
HV CARGO TROUSER
See Pg75



CLASS 1



SHOWER
RESISTANT



UNISEX FIT

SEE PGS 80-81 FOR QUICK COLOUR GUIDES SEE PGS 82-83 FOR SIZE GUIDES



Ribbed contrast
colour collar

Provides level 3
protection

Ribbed contrast
cuffs & hem

RX700

WAISTCOAT

SIZES: **S-6XL**

FABRIC CONTENT:
100% Polyester

FABRIC WEIGHT: **120gsm**

CLASS 2*



HV Orange 6XL HV Yellow 6XL

CLASS 1*



HV Yellow Black HV Yellow Orange HV Yellow Pink



HV Yellow Purple HV Yellow Red HV Yellow Royal Blue



HV Yellow Lime HV Yellow Navy HV Yellow Paramedic Green

NON CERTIFIED



White Black Kelly Green



Lime Maroon Navy



Paramedic Green Pink 5XL Purple



Raspberry Red Royal Blue 6XL



Sapphire Sky Blue

RX700J

KIDS WAISTCOAT

SIZES: **S-L**

FABRIC CONTENT:
100% Polyester

FABRIC WEIGHT: **120gsm**

CERTIFIED: EN 1150:1999



HV Orange HV Yellow

NON CERTIFIED



Lime Pink



Royal Blue Red

RX715

HV LONG SLEEVE POLO

SIZES: **S-5XL**

FABRIC CONTENT:
100% Polyester Birdseye

FABRIC WEIGHT: **150gsm**

CLASS 3*



HV Orange Navy



HV Yellow Navy

RX705

EXECUTIVE WAISTCOAT

SIZES: **S-5XL**

FABRIC CONTENT:
100% Polyester

FABRIC WEIGHT: **120gsm**

CLASS 2*



HV Orange HV Yellow

CLASS 1*



HV Yellow Paramedic Green HV Yellow Royal Blue

RX720

HV T-SHIRT

SIZES: **S-5XL**

FABRIC CONTENT:
100% Polyester Birdseye

FABRIC WEIGHT: **150gsm**

CLASS 2*



HV Orange Navy



HV Yellow Navy

RX710

HV POLO

SIZES: **S-5XL**

FABRIC CONTENT:
100% Polyester Birdseye

FABRIC WEIGHT: **150gsm**

CLASS 2*



HV Orange Navy



HV Yellow Navy

RX730

HV SWEATSHIRT

SIZES: **S-5XL**

FABRIC CONTENT:
100% Polyester

FABRIC WEIGHT: **280gsm**

CLASS 3*



HV Orange Navy



HV Yellow Navy

Available in sizes up to 6XL and 5XL where indicated with all others available up to 3XL

RX740

HV HOODIE

SIZES: **S-5XL**

FABRIC CONTENT:

100% Polyester

FABRIC WEIGHT: **280gsm**

CLASS 3*



HV Orange
Navy



HV Yellow
Navy

RX760

HV CARGO TROUSER

SIZES: **S-5XL**

FABRIC CONTENT:

80% Polyester

20% Cotton Twill

FABRIC WEIGHT: **280gsm**

CLASS 1*

NON CERTIFIED



HV Orange



HV Yellow



Navy

RX750

HV FULL ZIP FLEECE

SIZES: **S-5XL**

FABRIC CONTENT:

100% Polyester Fleece

FABRIC WEIGHT: **280gsm**

CLASS 3*



HV Orange
Navy



HV Yellow
Navy

RX770

HV BOMBER JACKET

SIZES: **S-5XL**

FABRIC CONTENT:

**100% Polyester 300D Oxford
with PU coating /185gsm (Shell)**

100% Polyester /160gsm (Padding)

100% Polyester Taffeta /45gsm (Lining)

CLASS 3**



HV Orange



HV Yellow



CLASS 1



CLASS 2



CLASS 3

All Pro RTX High Visibility garments with the EN ISO accreditation meet the criteria of an EU Type Examination in accordance with the Annex V of the PPE Regulation EU 2016/425.

Satisfactory testing has been carried out and all products are noted with either Class 1, Class 2, Class 3 or Non Certified indicators.





MENS / UNISEX

| | XS | S | M | L |
|----------------------------|------------|------------|------------|------------|
| To fit Chest (cm) | 86 | 91 | 101 | 111 |
| To fit Chest (inch) | 34 | 36 | 40 | 44 |
| To fit Waist (inch) | 28-30 | 30-32 | 32-34 | 34-36 |
| To fit Waist (cm) | 71-76 | 76-81 | 81-86 | 86-91 |
| | XL | 2XL | 3XL | 4XL |
| To fit Chest (cm) | 121 | 132 | 142 | 152 |
| To fit Chest (inch) | 48 | 52 | 56 | 60 |
| To fit Waist (inch) | 36-38 | 38-40 | 40-42 | 42-44 |
| To fit Waist (cm) | 91-96 | 96-101 | 101-106 | 106-111 |
| | 5XL | 6XL | 7XL | 8XL |
| To fit Chest (cm) | 157 | 162 | 167 | 172 |
| To fit Chest (inch) | 62 | 64 | 66 | 68 |
| To fit Waist (inch) | 44-46 | 46-48 | 48-50 | 50-52 |
| To fit Waist (cm) | 111-116 | 116-121 | 121-127 | 127-129 |

LADIES

| | 6 XXS | 8 XS | 10 S | 12 M |
|---------------------|----------|----------|-----------|---------|
| To fit Waist (inch) | 22-24 | 24-26 | 26-28 | 28-30 |
| To fit Waist (cm) | 56-61 | 61-66 | 66-71 | 71-76 |
| | 14 L | 16 XL | 18 2XL | |
| To fit Waist (inch) | 30-32 | 32-34 | 34-36 | |
| To fit Waist (cm) | 76-81 | 81-86 | 86-91 | |

KIDS

| | S | M | L |
|--------------|---------|---------|---------|
| Chest (inch) | 28 | 30 | 32 |
| Age | 4-6 | 7-9 | 10-12 |
| Height (cm) | 101-116 | 122-128 | 134-146 |



To Fit measurements are a guide only.





PRO **RTX**