



Damen-Raglan-Sweatshirt

Normale Passform

XS > XXL

300 GSM

Einzelheiten

- Raglanärmel
- 2X1 Rippstrick am Kragen, an den Ärmelbündchen und am unteren Saum
- Dreinadel-Flachnaht an Hals, Ärmeln, Seitennähten und Halbmond
- Zweinadel-Nähte am unteren Saum und den Ärmelbündchen
- Innenliegendes Großkorn-Nackenband
- Eigenstoff-Halbmond am Nacken

Composition

Shell - Terry

100% gekämmte ringgesponnene Bio-Baumwolle - , 300.0 GSM
Vorgewaschen

Pflege

Wash similar colours together, no ironing on print, wash and iron inside out.



Herkunftsland

Weaving : Bangladesh

Dyeing : Bangladesh

Assembly : Bangladesh



Organic
Certified by Control Union
CU 819434



STANDARD
100
2012163
Centexbel
www.oeko-tex.com



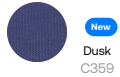
Whites



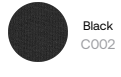
Colors



New
Pink Joy
C360



New
Dusk
C359



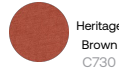
Black
C002



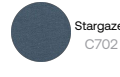
Blue Soul
C149



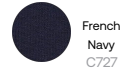
Anthracite
C253



Heritage
Brown
C730



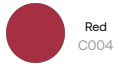
Stargazer
C702



French
Navy
C727



Lavender
C063

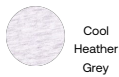


Red
C004



Cotton
Pink
C005

Essential Heathers



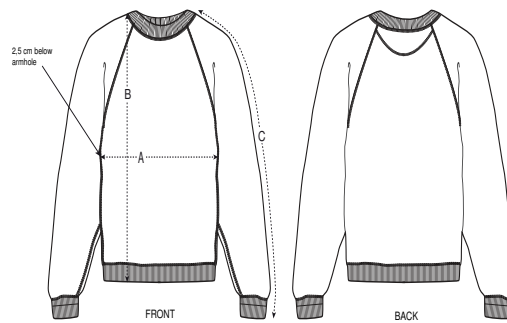
Cool
Heather
Grey
C146

Special Heathers



Eco-
Heather
C147

Größenführer



| Sizes | | XS | S | M | L | XL | XXL |
|-------|---------------|------|----|------|------|----|------|
| A | Half Chest | 49 | 52 | 55 | 58 | 61 | 65 |
| B | Body Length | 58 | 61 | 63 | 65 | 67 | 69 |
| C | Sleeve Length | 67.8 | 69 | 70.5 | 71.8 | 73 | 74.3 |

Verpackung

| Sizes | | XS | S | M | L | XL | XXL |
|-------|------------|----|----|----|----|----|-----|
| | Pieces/bag | 5 | 5 | 5 | 5 | 5 | 5 |
| | Pieces/box | 20 | 20 | 20 | 20 | 20 | 20 |