



Damen-Langarmshirt

Normale Passform

XS > XXL

180 GSM

Einzelheiten

- Set-In-Ärmel
- 1x1 Ripp am Halskragen
- Schmale Doppelnadel-Steppnähte an Ärmelbündchen und Saum
- Innenliegendes Nackenband aus Eigenstoff

Composition

Shell - Singlejersey
100% gekämmte ringgesponnene Bio-Baumwolle - , 180.0 GSM
Vorgewaschen

Pflege

Wash similar colours together, no ironing on print, wash and iron inside out.



Herkunftsland

Weaving : Bangladesh
Dyeing : Bangladesh
Assembly : Bangladesh



Organic
Certified by Control Union
CU 819434



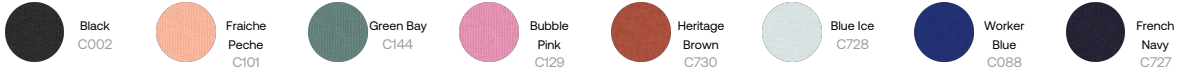
2012163
Centexbel
www.oeko-tex.com



Whites



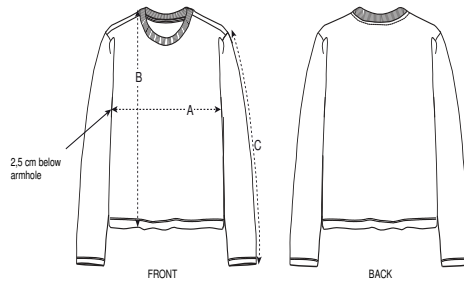
Colors



Essential Heathers



Größenführer



Sizes		XS	S	M	L	XL	XXL
A	Half Chest	45	48	51	54	57	61
B	Body Length	56.5	59.5	61.5	63.5	65.5	67.5
C	Sleeve Length	58.5	60	61.5	63	64.5	64.5

Verpackung

Sizes		XS	S	M	L	XL	XXL
	Pieces/bag	5	5	5	5	5	5
	Pieces/box	50	50	50	50	50	50