



Damen ärmellose Fleece-Jacke

Enganliegende Passform

XS > XXL

300 GSM

Einzelheiten

- Sleeveless
- Elastic binding at neck edge, armhole and hem
- Inside back neck grosgrain loop
- Nylon coil zipper with metal puller and cord ending
- Brushed fabric with Anti piling finish on inside and outside
- Front side welt pockets with zip opening
- Inside back neck tape in recycled polyester

Composition

Shell - Polar Fleece
100% recyceltes Polyester - , 300.0 GSM
Brushed

Pflege

Wash similar colours together. No ironing. Close all snaps before washing. Line dry.



Made with 100% GRS recycled polyester
Certified by Control Union
P17/06/2024



www.oeko-tex.com



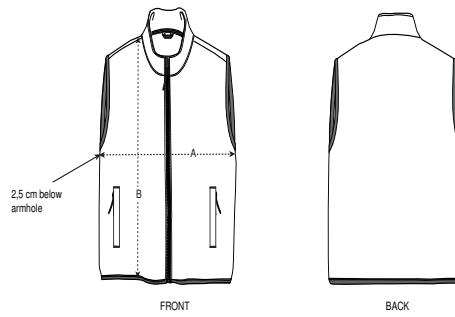
Herkunftsland

Weaving : China
Dyeing : China
Assembly : Bangladesh

Colors



Größenführer



Sizes		XS	S	M	L	XL	XXL
A	Half Chest	45	48	51	54	58	62
B	Body Length	59	62	64	66	68	70

Verpackung

Sizes		XS	S	M	L	XL	XXL
	Pieces/bag	5	5	5	5	5	5
	Pieces/box	15	15	15	15	15	15